

A tall, modern outdoor light fixture made of light-colored wood and black metal. It features a horizontal arm at the top with a rectangular light fixture. The fixture is mounted on a black base. The background is a misty forest with sunlight filtering through the trees.


WOOD SOLAR LIGHT

1464

Natural light for a sustainable future

Wood solar light 1464

Light in harmony with nature

ENGLISH 

At a time when progress and environmental protection often seem to be at odds, we present a unique solution: our new wooden solar street light.

Possible uses:

- **Community Streets:** Bring nature to your community's streets and pathways while saving energy and money
- **Parks:** Illuminate parks and gardens with light that blends in with the natural environment
- **Natural areas:** Where nature conservation is a priority, not only with natural materials but also with insect-friendly light (3000K - on request)

Options:

- Timer switch
- Different lighting profiles can be stored if required

Electronic:

- Intelligent and energy efficient charging electronics
- Brightness sensor to adjust the light intensity to the environment (rain, snow, moonlight, etc.)
- Motion detector
- IP54 protection class
- NB-IoT module for back office communication
- LED head Made in Germany

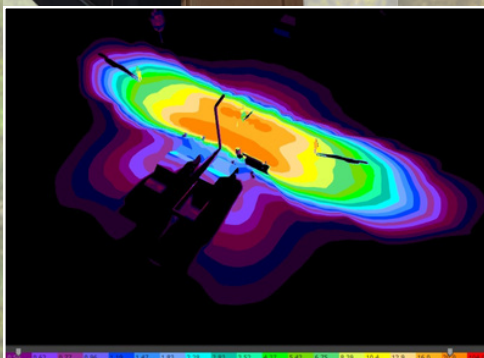
System independence:

- Over 2 weeks of system autonomy without sun
- Lead-gel battery; 90Ah (leak proof and maintenance free with a service life of up to 12 years)
- Batteries integrated into the base of the lantern

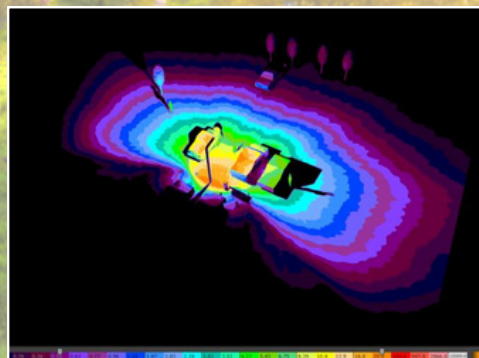
ATB Lantern Manager (LaMa)



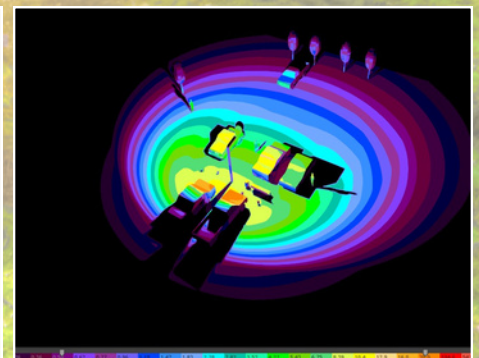
- Easy-to-use web interface
- Reading of operating states (e.g. warnings, errors, etc.)
- Statistical data clearly listed
- Remote maintenance and service options via NB-IoT communication



Street lighting: 38x10 m



Parking lot lighting front: 47x25 m



Central parking lot lighting: 37x39 m