

SOLAR STREET LIGHT

1460 / 1462 vertical



Technical data:

- Street light made of aluminum
- 20W LED light head
- 2400 lm adjustable
- Color temperature 6500 K (optional 3000 K - insect friendly)
- 1 x 22Wp Top and 2 x 31Wp Back (84 Wp)
- 90Ah long-lasting cycle battery (up to 12 years lifespan)
- Weight lantern without battery 53 kg
- Integrated NBloT modem for communication with the lantern management software (LaMa)



Vandalism and service:

- Tempered glass solar panels
- Column aluminum powder coating in standard Color RAL 7016 (anthracite)
- Safety lock for battery compartment door
- Access to batteries and controls from street side (easy maintenance)
- Tool-free replacement of batteries and controls

Operating time and sensors:

- Sunset to sunrise adjustable (astronomical mode)
- Customer-specific programmable operating times (timer)
- Motion detector for adjustable brightness levels
- Brightness sensor to adjust brightness to snow, rain or other conditions
- Various combinations possible (on request)

Lighting example:

35% light intensity in standby mode (freely adjustable)

100% light intensity after activating the motion detector or setting the operating hours

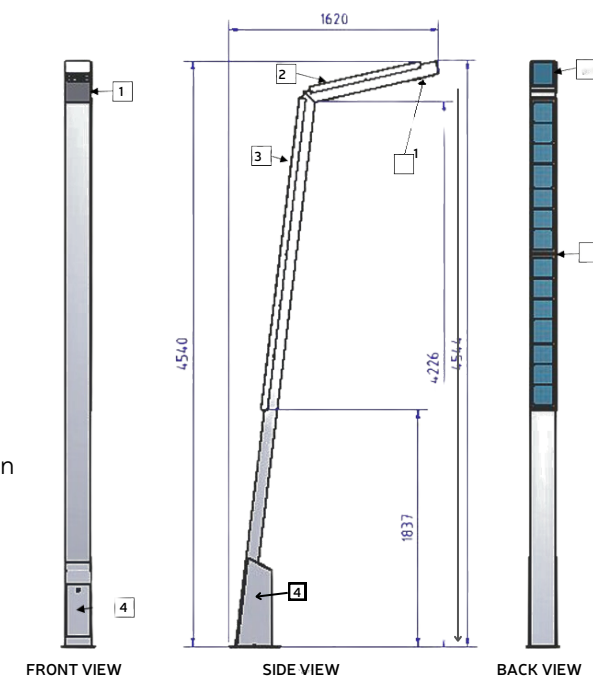


Type 1460

Size and description

Total height 4.54 m
 Weight approx. 53 kg (without batteries)
 Weight battery: approx. 27 kg

- 1) LED head
- 2) Solar panel above (Top)
- 3) Solar panel (Back)
- 4) Technical door - the batteries and the control unit are located in the technical room

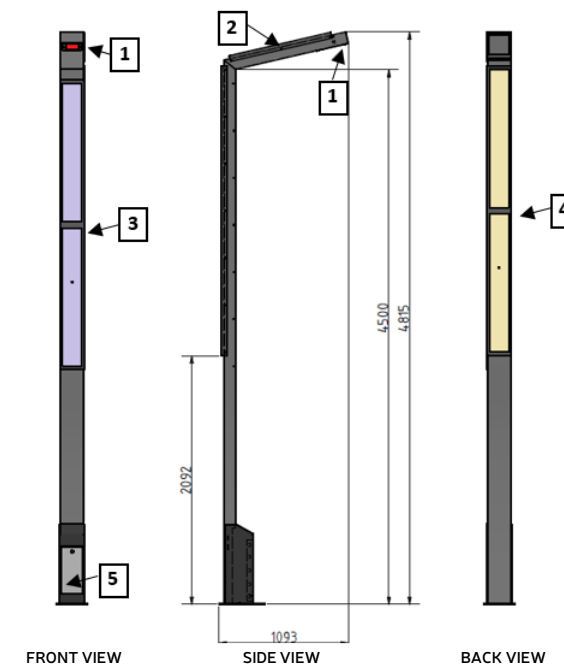


Typ 1462 Vertical

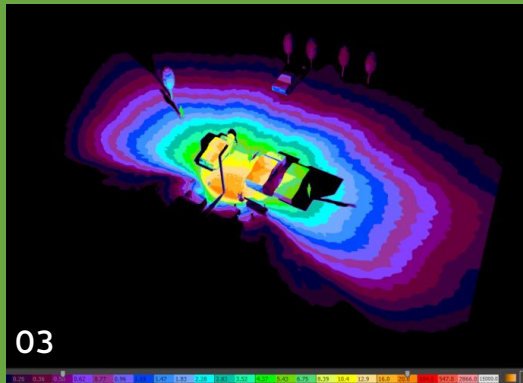
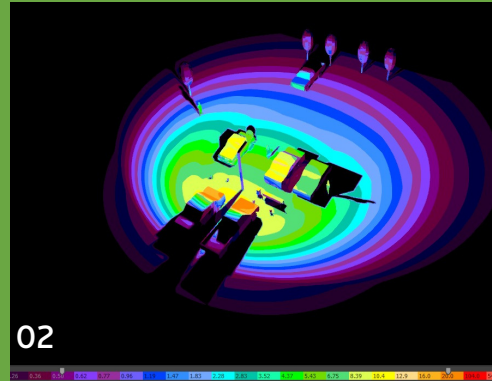
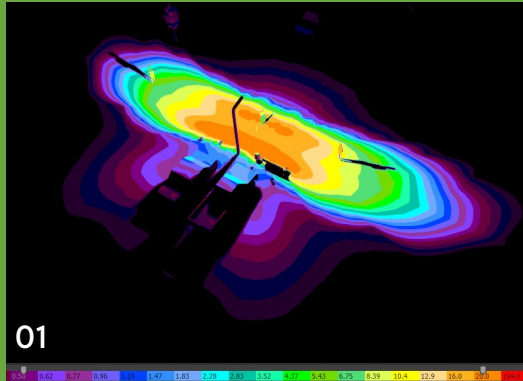
Size and description

Total height 4.80 m
 Weight approx. 56 kg (without batteries)
 Weight battery: approx. 27 kg

- 1) LED head
- 2) Solar panel above (Top)
- 3) Solar panel – front side option
- 4) Solar panel – back
- 5) Technical door - the batteries and the control unit are located in the technical room



Graphical representation of the illuminated area and the lux distribution:



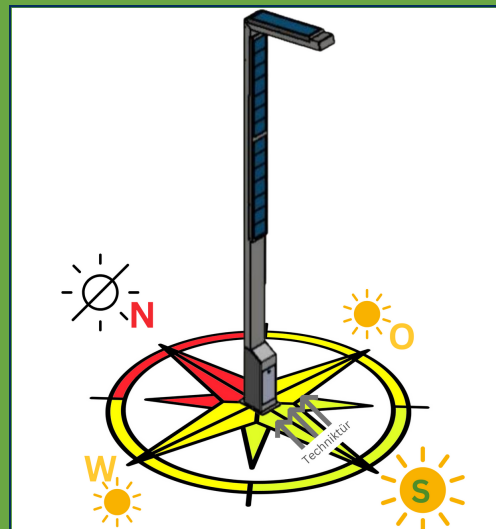
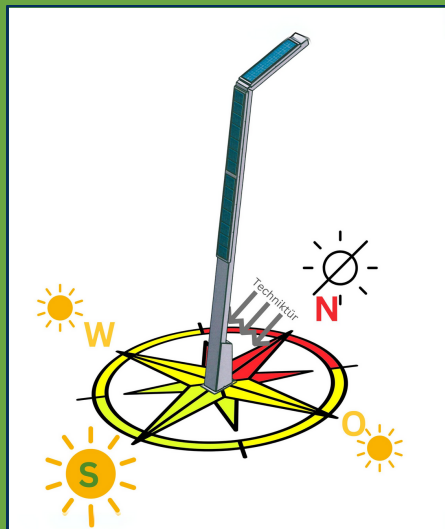
TYPES OF LIGHTING

01 • Street and path lighting (approx. 38 m x 10 m)

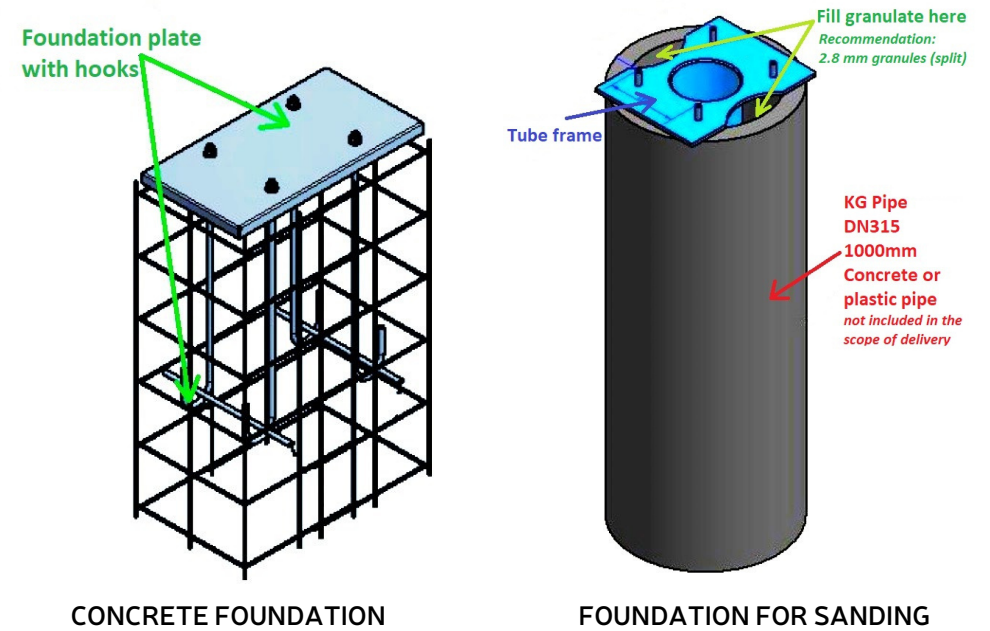
02 • Central parking lot lighting (central installation location) (approx. 37 x 39 m)

03 • Frontal parking lot lighting (side installation location) (approx. 47 x 25 m)

Installation recommendation solar lantern 1460 / 1462 vertical



Fastening the lanterns (conforms to wind load zone 3 Germany)



ATB Lantern Manager (LaMa)

Self-monitoring management system with an easy-to-use web interface

You will receive free access to our monitoring system Lantern Manager (LaMa) for 5 years. This enables, for example, the reading of operating states such as battery charge status or error messages as well as further statistical evaluations to optimize the lighting. The access data to the backend will be activated after the lantern has been installed and put into operation.

