

A tall, black solar street light stands on a paved path. The light fixture is illuminated, casting a bright glow. The background features a sunset over the ocean with mountains in the distance. The sky is filled with soft, white clouds. The overall scene is serene and modern.

# SOLAR STREET LIGHT

1460/1462

**The lighting of the future is solar**



# Solar Street Light 1460/1462

## The lighting of the future is solar

ENGLISH 



Discover the limitless energy of the sun with our Solar Lantern. Our innovative technology allows you to light your streets, parks, paths or any outdoor space in an efficient yet environmentally friendly way.

### Possible uses:

- **Hiking trails, parks and playgrounds, rural areas** and other locations where electricity infrastructure may be unavailable.
- **Campsites or protected areas** where access to electricity may be limited and where protecting nature and wildlife is important - on request with insect-friendly 3000K light.
- **Bus stops, campuses or commuter car parks** where early morning safety is important.
- **Cemeteries, monuments and landmarks:** Light up the special places in your community in a sustainable and appropriate way.

To cover different conditions, we offer the inclined version **1460** or the vertical version **1462** with different types of lighting.

### Electronic:

- Intelligent and energy efficient charging electronics
- Brightness sensor to adjust the light intensity to the environment (rain, snow, moonlight, etc.)
- Motion detector
- IP54 protection class
- NB-IoT module for back office communication
- LED head Made in Germany

### System independence:

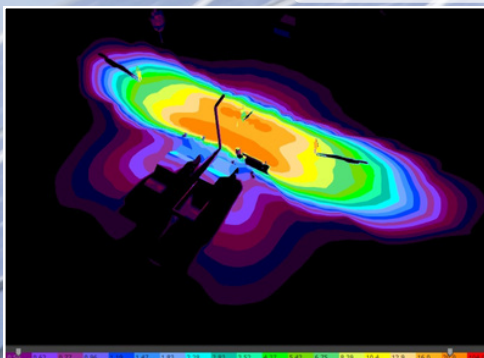
- Over 2 weeks of system autonomy without sun
- Lead-gel battery; 90Ah (leak proof and maintenance free with a service life of up to 12 years)
- Batteries integrated into the base of the lantern



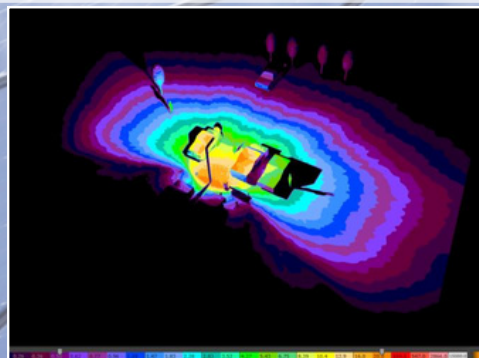
### ATB Lantern Manager (LaMa)

- Easy-to-use web interface
- Reading of operating states (e.g. warnings, errors, etc.)
- Statistical data clearly listed
- Remote maintenance and service options via NB-IoT communication

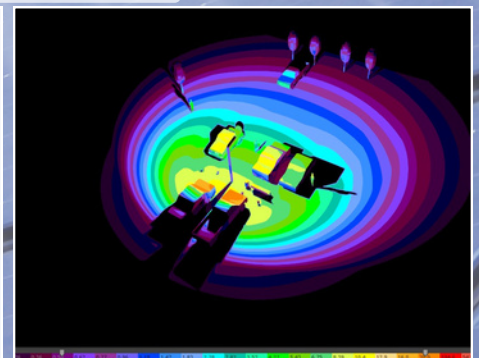
Illuminance and type of lighting can be configured according to location



Street lighting: 38x10 m



Parking lot lighting front: 47x25 m



Central parking lot lighting: 37x39 m